

# Takamatsu Airport Limousine Bus

The Takamatsu Airport Limousine Bus will take you to various tourist spots and nearest stations. Free Wi-Fi\* access on board!

\*For smartphones and tablets, select "kotochan-wifi" (password: kotoden1)

## Bus stops



※You can use the IC card "IruCa" to board the bus.  
 ※You can board the bus headed to Takamatsu Airport from any of the bus stops.  
 ※For the bus headed to Takamatsu Station, you can only board from Takamatsu Airport; the bus will only stop for passengers getting off at any of the bus stops.

## A handy timetable on your smartphone!

Keep up to speed with our combined bus-train platform with details on all routes, transfers, timetables and fares.

●Train and bus transfer search

Accessible through our homepage.

<http://www.kotoden-search.jp/>

See details on our train service timetables and operation status.

●Kotoden Timetable for smartphone.

Accessible through our homepage or the QR code on the right.

<http://www.kotoden.co.jp/publichtm/sp/>



## For more information and enquiries

●Kotoden Bus/☎087-821-3033

●Kotoden Taxi/☎0120-85-1774



Train transfers from Takamatsu Sta. Bus Terminal, Takamatsu Chikko Bus Stop, Kawaramachi Sta. Front, and Kawaramachi Station East Entrance Bus Stop - a useful network for sightseeing in Takamatsu! For travel between Takamatsu Airport and Takamatsu City Centre, please use our Takamatsu Airport Limousine Bus service.



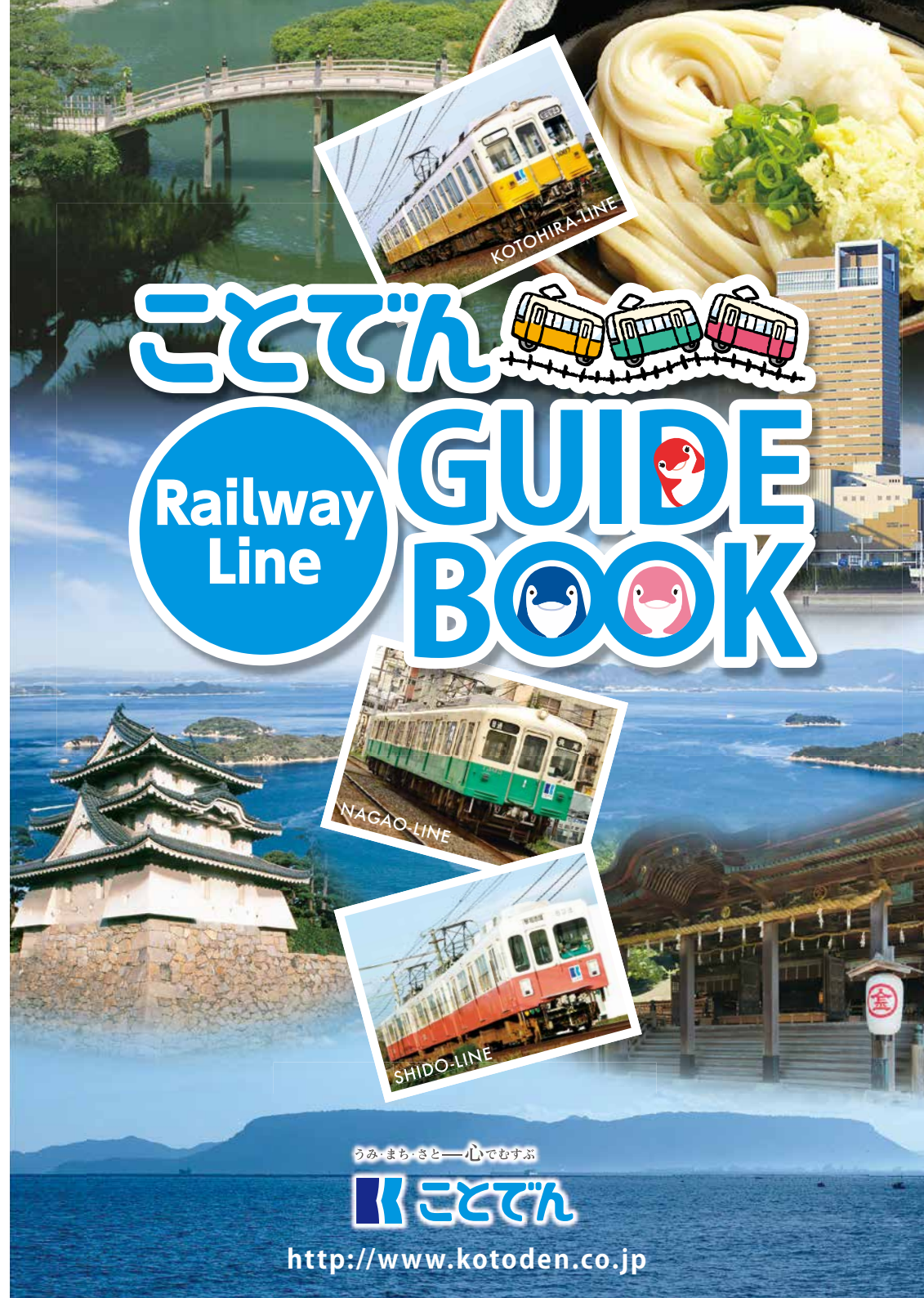
We can pick you up from Ritsurin, Katamoto, Yashima Sta., Kenkou Land, Busshouzan and others, as well as provide assistance in your travels.

087-831-6008

**こてん** Takamatsu Kotohira Electric Railroad, Inc.

Operation Office: ☎087-831-6008

Transportation Service Department: ☎087-863-7300



# こてん Railway Line GUIDE BOOK

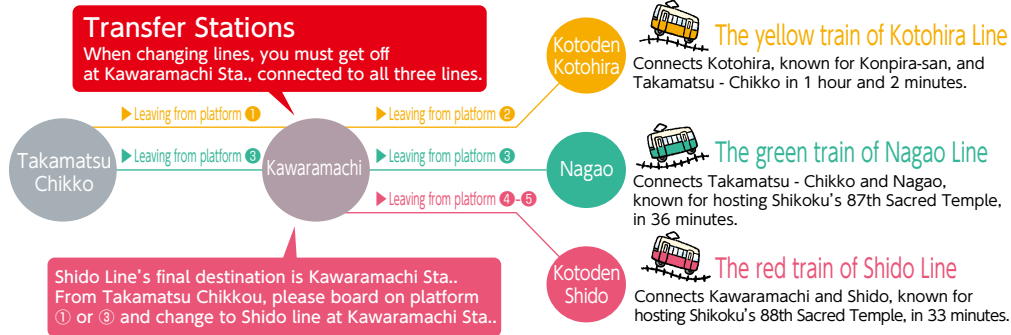
うみ・まち・さと—心でむすぶ



<http://www.kotoden.co.jp>

# What is Kotoden?

Takamatsu Kotohira Electric Railroad, Inc. is the railroad company – nicknamed Kotoden by locals – operating the trains traveling the three color themed train lines connecting the three main locations in Kagawa Prefecture: ●Kotohira, ●Nagao and ●Shido. Having inherited many historical carriages from many areas across Japan, Kotoden is also known as the “Moving Train Museum”.



# Special Tickets!

## One-day Ticket

With our one-day ticket, featuring Kotoden's mascots Koto-chan and Kotomi-chan, you can travel with Kotoden as many times as you want in one day.

No more wasting time buying a new ticket every time you change trains!

●Adults  
1,230yen

●Children  
620yen

For children from 6 to 12 years old

★Available at all manned stations.



## Kotoden Hot Springs Travel/Bathing Pass

A handy, fan-themed ticket that will not only take you to your destination, it will also give you the chance for a soak at the modern hot springs in Busshozan.

[Travel fare + Busshozan hot springs] bathing fare + towel + fan 1,000yen



★Available at Takamatsu-Chikko Sta., Katarahamachi Sta., Kawaramachi Sta., Ritsurin-Koen Sta., Busshozan Sta. and Imabashi Sta..

Terms applicable as of June 2016.

## Kotoden Cinema Ticket

In collaboration with Aeon Entertainment, Inc., our Kotoden cinema ticket gives you freedom to travel on all train lines for one day and also entry to any screening at Aeon Ayagawa or Aeon Takamatsu-Higashi, with a mini popcorn set on the side!

[Travel fare + cinema ticket + mini popcorn]

●Adults  
2,000yen

●Middle-school students  
1,800yen

●Children  
1,300yen

For children from 6 to 12 years old

★Available at all manned stations.



# Travel with Kotoden!

- Select the route and fare.
- Insert cash to buy your ticket.
- Cross the gate and check the platform.
- Confirm your destination and board the train.



Look for the train line stopping at your desired destination on the board and the respective fare. Adult fares (black) / children fares (red)  
(The photo shows the fares applicable in June 2016.)



You can buy your ticket using the ticket machines at any station. After inserting your cash, press the correct fare button. The ticket will be issued and come out together with your change.



Enter the gate and check the board to confirm which platform you should board from. The picture above applies to stations where there is an attendant at the ticket gate. If you carry an IruCa pass, use the automatic turnstile instead.

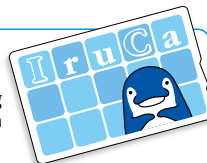


You may board once you're at the right platform and the door opens.  
※At some stations, passengers board and get off the train at the same platform.

- Please make sure to hand your ticket to the attendant when you get off at unmanned stations.

**Get your IruCa IC travel pass for 2,000 yen!** SF 1,500 yen / Deposit 500 yen

You can purchase your IruCa pass at any manned Kotoden station and use it when boarding any Kotoden train or bus. This prepaid card can also be used in many shops across town (rechargeable up to a maximum balance of 20,000 yen).



# Kotoden's Mascots!

## Koto-chan

Male, around 20 years old

(Birthday) August 8th (Leo)

(Hobby) Trips

(Height) 1.80m

(Weight) 120kg

## Kotomi-chan

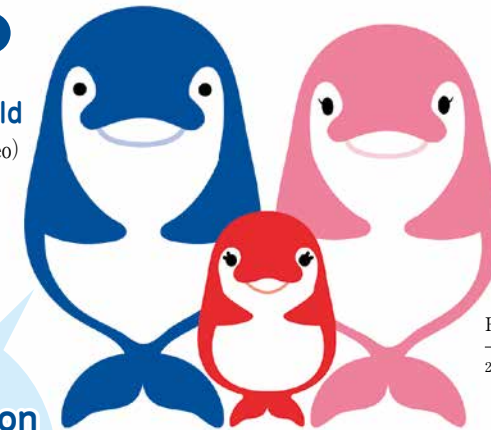
Female, around 18 years old

(Birthday) May 2nd (Taurus)

(Hobby) Confectionery

(Height) 1.70m

(Weight) That's a secret!



Koto-chan's on  
twitter

<http://twitter.com/#!/irucakoto>

## Kotonon-chan

A cheerful little girl!

(Birthday) October 10th (Libra)

## History

2002/8/8 Adopted by Kotoden, Koto-chan has since been working with us as a station attendant. Loves *udon* with egg, and has earned himself a nice, round belly because of that!

2003/5/2 We find out about his love interest, Kotomi-chan, and his intentions to propose to her.

2011/11/18 Koto-chan and Kotomi-chan get married at Kotohira-gu.

2015/10/10 The fruit of Koto-chan and Kotomi-chan's love, Kotonon-chan, is born.

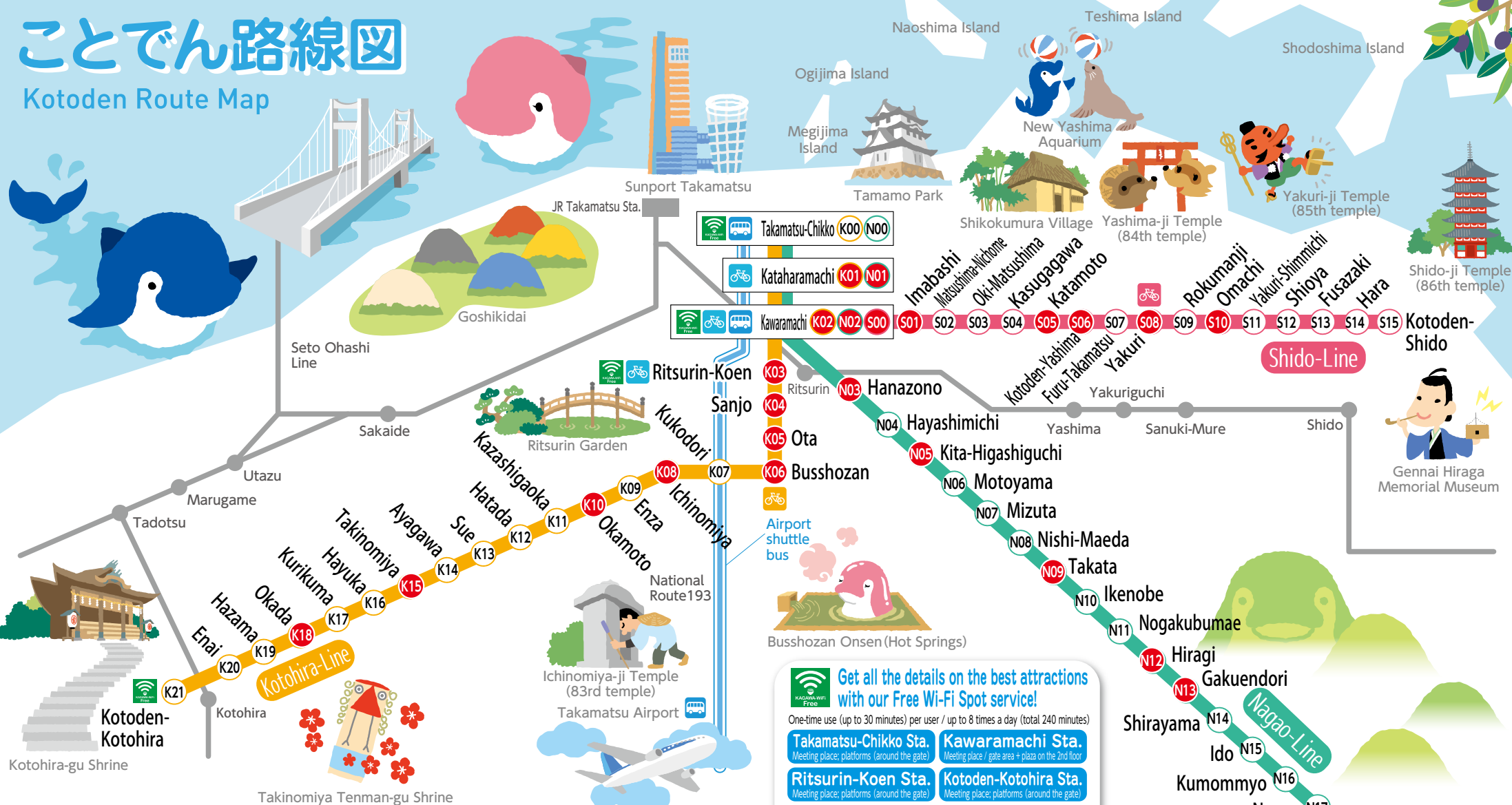


↑ The picture above shows our retro train, used in events and popular with train fans. You can board this train during these events.

From the left: Series 20 No. 23 from 1925, Series 1000 No. 120 and Series 3000 No. 300 from 1926 and Series 5000 No. 500 from 1928.

# ことでん路線図

## Kotoden Route Map



- Kotohira-Line (32.9km)
- Nagao-Line (14.6km)
- Shido-Line (12.5km)
- Limousine Bus
- Stopover stations
- JR-Line
- Main road
- Kagawa Wi-Fi spot
- Bicycle Rental Serv. (Takamatsu-shi)
- Bicycle Rental Serv. (Kotoden)

### You can rent a bicycle in Busshozan and Yakuri stations!

Now you can enjoy everything there is to see around Busshozan and Yakuri with our bicycle rental service. With our electric bicycles, you can move around and truly enjoy your surroundings without breaking a sweat!  
 ★For more information, please refer to the instructions provided at our various stations.

### You can also use this service at any station with this mark!

Get your bicycle at Kawaramachi Sta., Ritsurin-Koen Sta. or Katakaramachi Sta. and return it at any port.  
**Usage time:** Kawaramachi Sta. / Ritsurin-Koen Sta.: 7:00 - 23:00 (requests accepted until 22:00)  
 Katakaramachi Sta.: 7:00 - 22:00  
**Prices:** up to 6 hours - 100 yen, 6-24 hours - 200 yen

### Get all the details on the best attractions with our Free Wi-Fi Spot service!

One-time use (up to 30 minutes) per user / up to 8 times a day (total 240 minutes)

**Takamatsu-Chikko Sta.** Meeting place: platforms (around the gate)  
**Kawaramachi Sta.** Meeting place / gate area + plaza on the 2nd floor

**Ritsurin-Koen Sta.** Meeting place: platforms (around the gate)  
**Kotoden-Kotohira Sta.** Meeting place: platforms (around the gate)

- How to use**
- ① Select KAGAWA-WiFi in the Wi-Fi settings of your device;
  - ② Open your browser and tap "Connect to the Internet". Check "I agree" on Terms and Conditions;
  - ③ Input your e-mail address and tap "Connect".
  - ④ Your device will automatically connect to "Udon-ken Tabi Net".

### • Enjoy Sanuki to the fullest with our stopover option!

You can get off at the designated stations for a quick stop and board again for free. Trains pass by in short intervals - every 15-30 minutes for Kotohira line and around 20 minutes for Shido and Nagao lines (please make sure to keep your ticket if you intend to board a second time. Note that you may not get off at your final destination as a stopover).

※Find information on availability of coin lockers at many of our stations on our homepage.



# 琴平線 Kotohira-Line

Takamatsu-Chikko ↔ Kotoden-Kotohira

Connecting Takamatsu-Chikko to Kotohira's famous Kopira-san in 1 hour and 2 minutes!



## Shikoku Shop 88

Located on the first floor of Symbol Tower, Shikoku 88 sells a wide range of approximately 1800 unique items ideal for gifts, including curious character goods and capsule toys and pilgrim items characteristic of this side of Japan.



Takamatsu Sunport 2-1 Takamatsu Symbol Tower 1st Floor ☎087-822-0459  
 ○Open everyday 10:00 – 21:00  
 ○Access: app. 1-min. walk from Takamatsu-Chikko Sta. <http://shikokushop88.com/>

## Sunport Takamatsu

### Enjoy a nice stroll from here to Akatoudai or Kitahama alley.

With a selection of variety shops, gift shops, and restaurants indoors, as well as a collection of artworks scattered across the area, Sunport is also close to the port giving you access to various nearby islands such as Shoudoushima, Naoshima and Teshima. A very lively location, especially during the Setouchi Art Festival, hosted every 3 years.  
 ○Access: app. 3-min. walk from Takamatsu-Chikko Sta.

## Takamatsu Castle and Virtual Experience



### Takamatsu Castle Ruins - Tamamo Park

One of Japan's Three Water Canal Castles, located in Tamamo Park. You may find visitors aboard the *Chamomaru*, the historical boat travelling along the channel (unavailable during Winter season), or even throwing food at the bream to perhaps attract good luck. You can see the *yagura* structures at the ruins site, the stone foundations of which were renovated in 2013. Download the VR *Takamatsujo* app on your smartphone to see the castle in its original glory during your visit (you can also borrow a tablet from the staff). Events also programmed periodically.



Download the VR *Takamatsujo* app here



AppStore Google Play



Takamatsu-shi Tamamo-cho 2-1 ☎087-851-1521  
 ○Open April to September: 7:00 – 18:00 (East gate)  
 October to March: 8:30 – 17:00 (East gate)  
 From sunrise to sunset (West gate; variable throughout the year)  
 ○Closed on Dec. 29th, 30th, 31st ○Entry fee: 200 yen  
 ○Access: app. 1-min. walk from Takamatsu-Chikko Sta. <http://www.takamatsujo.com/>

## Japan's One and Only Pub Station

### Beer Pub Station (Irish Pub THE CRAIC)

At the only pub you can find at a train station in Japan, you can taste Ireland's Guinness, renowned craft beer and even Kotoden's own "Koto-chan Ale". This pub also offers a menu of local side dishes, so you are more than welcome to drop by this peculiar station even if only for a pint!  
 Takamatsu-Chikko Station ☎087-863-7723 (Kotoden Section)  
 ○Open Fri.-Sat.: 17:00 – 21:00, Sun.: 15:00 – 20:00 (variable during events)  
 ○No fixed closed days ○Prices: Guinness = 600 yen, Koto-chan Ale = 700 yen, and more.  
 ○Access: Inside Takamatsu-Chikko Sta.



## Wander through the arcade district

### Arcade district

In Japan's longest arcade district, you can find many grocery shops, bookshops and restaurants – a perfect place to get your shopping done and enjoy a meal while you're at it!  
 ○Access: from Katakaramachi Sta. to Kawaramachi Sta.

## Machi no Schule 963

This shop gathers a careful collection of the best items for your home, crafts and food products, providing for an upgrade for your lifestyle. Includes a café and frequent events.  
 Takamatsu-shi Marugame-machi 13-3 Takamatsu Marugame-machi Sanbagai Eastern Bldg. 2nd floor ☎087-800-7888  
 ○Open [shop] 11:00 – 19:30 / [café] Mon.-Thu. 11:30 – 18:00, Fri.-Sun. 11:30 – 22:00  
 ○Closed on the 3rd Monday of the month (date change on national holidays)  
 ○Access: app. 10-min. walk from Katakaramachi Sta. <http://www.schule.jp/>



## Takamatsu-Chikko

App. 2 min. Tourist map of the area!

App. 2 min.

## Katakaramachi

App. 2 min.

## Tourist map of the area!

## Kawaramachi

App. 2 min.

## Ritsurin-Koen

App. 2 min.

## Sanjo

App. 3 min.

## Ota

To Busshozan – app. 4 min. →

## For the Art lovers



### Kawaga Prefectural Museum

With both special and permanent exhibitions with connections to this prefecture, this museum displays a comprehensive record of Kagawa's history and culture.  
 Takamatsu-shi Tamamo-cho 5-5 ☎087-822-0002  
 ○Open 9:00 – 17:00  
 ○Closed Mon. (next day on national holidays)  
 ○Entry fee: variable for special exhibitions (permanent exhibitions: 410 yen) group tour discount available  
 ○Access: app. 10-min. walk from Takamatsu-Chikko Sta. app. 8-min. walk from Katakaramachi Sta. <http://www.pref.kagawa.jp/kmuseum/>

## Takamatsu Art Gallery

This gallery, renovated in 2016, gathers contemporary artwork as well as antiques, making it a suitable stage for special exhibitions and projects.  
 Takamatsu-shi Kon'ya-machi 10-4 ☎087-823-1711  
 ○Open 9:30 – 17:00 (during special exhibitions, Tue.-Sat./national holidays: open until 19:00)  
 ○Closed Mon. (next day on national holidays); New Year season (Dec. 29th – Jan. 3rd); open everyday during the Triennale Setouchi Art Festival  
 ○Entry fee: variable for special exhibitions (permanent exhibitions: 200 yen) group tour discount available  
 ○Access: app. 10-min. walk from Katakaramachi <http://www.city.takamatsukagawa.jp/museum/takamatsu/>



## Kawaramachi FLAG

At Kawaramachi FLAG, you will not only find various shops, but also get access to community services such as IKODE Kawaramachi (Takamatsu Community Service Centre), Light Fitness, the library, multipurpose studios, galleries, volunteer association base, and more. Many events are held at Kawara Park on the top floor of the building all year round.  
 Takamatsu-shi Tokiwa-cho 1-3-1 ☎087-812-7000  
 ○Open Hours: [Shopping floors] 10:00 – 20:00 (excluding some shops)  
 [Restaurant floor] 11:00 – 22:00 (excluding some restaurants)  
 ○Parking (underground): 7:30 – 22:00, Kawaramachi Sta. east gate 24/7 ○Closed on New Year's Day  
 ○Access: Kotohira Line, Nagao Line, Shido Line (stop at Kawaramachi Sta.) <http://www.k-flag.jp>



## Shopping right on the other side of the platform.



### Navi Station

An information desk to help you find information on all tourist spots, including Ritsurin Garden, Tamamo Park, Yashima and other attractions and shopping areas in the vicinity. The staff will also be able to help our foreign visitors in English.  
 Takamatsu-shi Tokiwa-cho 1-3-1 2nd Floor Concourse ☎087-887-0300  
 ○Open 10:00 – 19:00 ○Closed Wed.  
 ○Access: Kawaramachi Sta. 2nd floor Concourse <http://www.brsq.net/>

## Ritsurin Garden

Known for its unique and vast landscapes, the two distinct sides of this garden – with the *dairmyou* gardens in the southern half and the Meiji period Western theme of the northern area – you will be presented with many a view with each step. Enjoy the afternoon walking around the ponds, feeding the fish (additional fee), or maybe getting on a traditional Japanese boat to admire the view from another angle!  
 Takamatsu-shi Ritsurin-cho 1-20-16 ☎087-833-7411  
 ○Open 7:00 – 17:00 (may be changed depending on the season)  
 ○Open everyday ○Entry fee: 410 yen  
 ○Access: app. 10-min. walk from Ritsurin-Koen Sta. <http://ritsuringarden.jp/>



## Kagawa Specialty Shop "Ritsurin An"

A souvenir shop with over 1800 items, from your usual souvenirs to hidden gems. Be it a crafty decoration or a delicacy in taste, you are sure to rediscover one or two little treasures of Kagawa's charm. This place holds many events in every season, such as antique markets.  
 Takamatsu-shi Ritsurin-cho 1-20-16 ☎087-812-3155  
 ○Open everyday 9:00 – 17:00 ※Closing time may change in accordance with the park's  
 ○Entry fee not required when visiting the shop only.  
 ○Access: app. 10-min. walk from Ritsurin-Koen Sta. <http://www.ritsuringarden.jp/>



## Ride your way through Busshozan

With many things to see - from daiiryu Youshige Matsudaira's hounen-ji temple and the various merchant stores marking the Edo period to the shops in temple district turned into fancy coffee shops and designer shops - and new experiences such as hot springs available in the area, Busshozan is a place to explore on foot. Or wheels!

**Bicycle rental (electric type)**  
 With electric assist!

- Rental period: 8:30 - 19:00 (available everyday)
- Rental fee: 500 yen / 3 hours (extendable for 100 yen / hour)
- ※ Deposit: 3,000 yen (repaid upon return)
- How to rent: fill out request form and terms agreement form (proof of identity required)

**TOYTOYTOY**  
Aoi-do  
Busshozan Onsen  
Tenmayasando  
Café "Asile"  
A great café for a quick break

**General store rec.**  
Borrow a bicycle at the station!  
Patisserie Higuchi  
Home-made bakery and cake shop  
Delicious sandwich café  
Chikiri Shrine  
Bittersweet tales

**Udon restaurant rec. "Udon no Den"**  
See p.14 for more details.

**Takamatsu daiiryu temple**  
Hira Ike  
Busshozan Park  
Mae Ike  
Chikiri Shrine  
Police Sta.  
Post Office

**Onari highway**  
Pref. Road No.12  
Busshozan Sta. (bicycle rental serv.)

### Busshozan Onsen

Said to make one's beauty flourish, these hot springs are fit with a relaxing lounge room and revitalising cafeteria. Make the most of your experience by bringing your Busshozan bathing + travel fare + towel + fan Kotoden special ticket. For more details see p. 3.

Takamatsu-shi Busshozan-cho Otsu 114-5 ☎087-889-7750

- Open 11:00 - 24:00 (from 9:00 on Sat./Sun./national holidays)
- Closed on the 4th Tuesday every month (next day on national holidays)
- Price: 600 yen
- Access: app. 10-min. walk from Busshozan Sta. <http://busshozan.com/>

## Indulge yourself while saving!

### New Reoma World, central Shikoku's top theme park

With a total of 22 attractions, parades and other shows, and illuminations on display everyday!

Marugame-shi Ayauta-cho Kurikuma 40-1 ☎0877-86-1071

- Open everyday hours: 10:00 - 17:00 (times may change)
- Entry fee: Adult - 3,900 yen / Children - 3,400 yen (free pass)
- Access: app. 5-min. drive from Okada Sta.
- ★ For more information, visit website <http://www.newreomaworld.com/>

### Reoma no Mori Hotel

Drop by for a quick soak in our open-air bath (subject to open hours) or stay for the night!

Marugame-shi Ayauta-cho Kurikuma 40-1 ☎0877-86-5588

- Open 11:30 - 22:00 (last bath house entry: 21:00) (one-day bath)
- Prices: Adult - 980 yen (one-day bath)
- ★ For more information, visit website <http://www.oedoonsen.jp/reomanomori/>

### Aeon Cinema Ayagawa

Right off the Ayagawa station! Get your one-day ticket for any train line + cinema + mini popcorn set now!

Ayauta-gun Ayagawa-cho Kayahara 822-1 Aeon Mall Ayagawa 3rd floor ☎087-870-8787 ○ Open everyday

- Tickets: Adults - 2,000 yen / Middle school students - 1,800 yen / Children - 1,300 yen (travel + cinema + mini popcorn)
- Access: app. 3-min. walk from Ayagawa Sta. <http://www.aeon.jp/sc/ayagawa/>

### Konpira Grand Theatre (Kanamaruza)

Japan's oldest theatre, Kanamaruza is known for hosting Shikoku's Grand Konpira Kabuki Play every year, featuring many famous performers.

Nakatado-gun Kotohira-cho Otsu 1241 ☎0877-75-6716 (Kotohira-cho Board of Education)

- Open everyday 9:00 - 17:00
- Price: 500 yen
- Access: app. 15-min. walk from Kotoden-Kotohira Sta. <http://www.konpirakabuki.jp/index.html>

### Kotohira Maritime Museum

Visit for a look at the reproduction of the historical boat Konpira, known for sailing in the Setonaikai-sea, home to the sea god Konpira-san.

Nakatado-gun Kotohira-cho 953 ☎0877-73-3748

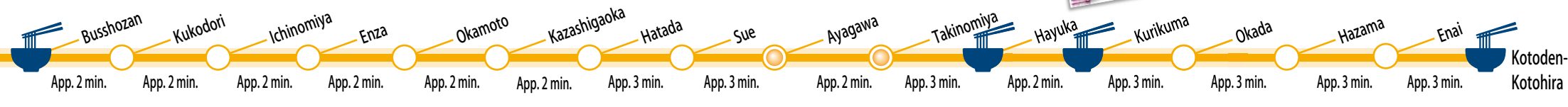
- Open everyday 9:00 - 17:00
- Entry fee: 450 yen
- Access: app. 10-min. walk from Kotoden Kotohira Sta. <http://www.kaiyohakubutukan.sakura.ne.jp/>

### Kotohira-gu Treasure Hall

Find all of Kotohiragu's treasures in display here - permanent and special exhibitions all year round.

Nakatado-gun Kotohira-cho 892-1 Kotohira-gu Shrine Office ☎0877-75-2121

- Open everyday 8:30 - 17:00 (last entry 16:30; open hours may change according to management criteria)
- Access: app. 15-min. walk from Kotoden-Kotohira Sta.
- ★ For more information, visit website <http://www.konpira.or.jp/>



### Roadside Station Takinomiya

Said to be the birthplace of Sanukiudon itself, this shop produces and sells its own udon and has a joint restaurant selling udon using home-produced wheat. You can also try their original Sanukiudon ice cream with udon and dashi filling in three different tastes: sappari ("cool"), jun-kotteri ("mild"), and chou-kotteri ("strong"). Why not also try strawberry picking and making udon?

Ayauta-gun Ayagawa-cho Takinomiya 1578 ☎087-876-5018

- Open [shop] 8:30 - 18:00; closed every 1st and 3rd Tuesday of the month [café] Mon.-Fri. 8:30 - 16:00, Sat./Sun./national holidays: 8:30 - 17:00; closed every 1st and 3rd Tuesday of the month
- [Restaurant] 10:00 - 15:00; closed on Tuesdays
- Access: app. 10-min. walk from Takinomiya Sta. <http://www.ryonan-udon.co.jp/>

### Roadside Station Takinomiya Udon Workshop

Try making this salt water and wheat specialty, which you can taste yourself afterwards!

☎087-876-5018 (booking number)  
 ○ Closed Sun./Tue./national holidays (+ Golden Week and New Years)

- Prices: 1,620 yen (adults), 1,080 yen (children)
- ※ booking up to 3 days in advance via phone call or booking form <http://www.ryonan-udon.co.jp/>

### Hokuroya Confectionery

This sweets shop, open for 48 years, offers both Western and traditional delicacies, including cakes using seasonal fruit, as well as its own originals. A shop well loved by the locals.

Ayauta-gun Ayagawa-cho Takinomiya 482-1 ☎087-876-0096

- Open 8:00 - 18:30
- Closed Mon. (except on national holidays)
- Access: app. 5-min. walk from Takinomiya Sta. <https://www.facebook.com/hokuroya>

### Experience the true taste of Sanuki!

#### Roadside Station Takinomiya - Strawberry Farm

With the perfect balance between sweet and sour, this greenhouse known as Sanuki-hime is filled with the sweet aroma of strawberries, which you can try picking and tasting yourself.

Ayagawa-cho Takinomiya 1578 ☎087-876-3361

- Open 10:00 - 15:00 ○ Closed Tue.
- Prices: (Dec.) Adults - 1,500 yen / Children - 1,000 yen (Jan. - Mar.) Adults - 1,200 yen / Children - 800 yen (Apr. - Jun.) Adults - 1,000 yen / Children - 600 yen (free for children under 2yo) all you can eat 30 min.
- Access: app. 10-min. walk from Takinomiya Sta. <http://www.matsumotonouen.com/> (Matsumoto Farm)

#### Kinryou no Sato

Originally an old brewery structure from the beginning of the Kansai era turned into a sake production museum. This place, located on the same road that leads to Kotohira-gu Shrine, allows natives to reminisce on the ancient methods of sake brewing and any visitors to learn more about the tools and evolution of this Japanese symbol.

Nakatado-gun Kotohira-cho 623 ☎0877-73-4133

- Open everyday 9:00 - 16:00 (until 18:00 on Sat./Sun./national holidays)
- Free entry ○ Access: app. 8-min. walk from Kotoden-Kotohira Sta. <http://www.nishino-kinryo.co.jp/museum/>

## Enjoy a time of relaxation and leisure at Konpira Hot Spring Village

### Yumoto Konpira Onsen Hananoyu - Koubaitei

Known for its open-air bath using seasonal flowers, Koubaitei also provides a unique experience with its auberge-style live kitchen. The one-day bath + buffet set is a popular choice!

Nakatado-gun Kotohira-cho 556-1 ☎0877-75-1588

- Open everyday
- Access: app. 5-min. walk from Kotoden-Kotohira Sta.
- ★ For more information, visit website <http://www.koubaitei.jp/>

### Kotohira Grand Hotel - Sakura no Sho

This hotel is popular for its open-air bath and elegant flower baths for women. The restaurant area on a viewing platform, fit with an open kitchen specialising in dishes such as teppan-yaki, tempura, and Sanuki udon, is sure to satisfy you with both good tastes and views. Discount on one-night bath set!

Nakatado-gun Kotohira-cho 977-1 ☎0877-75-1211

- Open everyday
- Access: app. 10-min. walk from Kotoden-Kotohira Sta.
- ★ For more information, visit website <http://www.sakuranosho.jp/>

### Kotohira Onsen Koto Sankaku

Built at the foot of Konpira-san, this inn offers various experiences, from the open-air bath to herbal baths. The flower petal baths are also popular among their customers.

Nakatado-gun Kotohira-cho 685-11 ☎0877-75-1000

- Open 11:00 - 16:00 (one-day use last entry to bath house: 15:00)
- Closed Thur. ○ One-day price: 900 yen
- Access: app. 3-min. walk from Kotoden-Kotohira Sta.
- ★ For more information, visit website <http://www.kotosankaku.jp/>

### Kotohira-gu Shrine

Challenge your endurance by climbing the 1368 stone steps leading to the inner shrine of sea god Konpira-san of Sanuki, as it is friendly referred to by locals. There are many spots along the way for you to find more about this area of Japan, such as the traditional shoin, Yuichi Takahashi Gallery and the Treasure Hall.

Nakatado-gun Kotohira-cho 892-1 ☎0877-75-2121

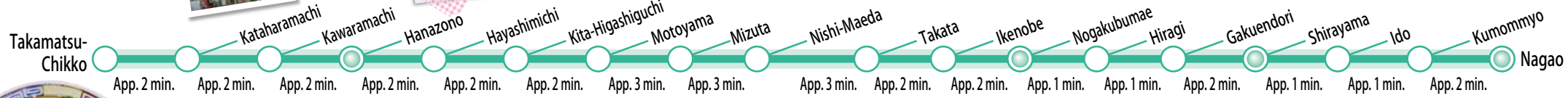
- Access: app. 15-min. walk from Kotoden-Kotohira Sta. <http://www.konpira.or.jp/>



# 長尾線 NaGao-Line

Takamatsu-Chikko ↔ Nagao

A path crossing many a charming spot veiled by daily life.



## Ma-chan

Open since 1952 right after the war, this restaurant has been passed down through 3 generations, said to offer a "taste one will not tire of". In fact, many customers visit on a daily basis for the Chinese soba chicken soup, and the grilled tofu made from handpicked soybeans makes for a superb meal. Be sure to be generous on their special soy sauce and *karashi miso* during your visit.

Takamatsu-shi Hanazono-cho 1-10-16  
☎087-834-4684

- Open 17:00 - 2:00
- Closed Sun. (open on national holidays)
- Access: app. 1-min. walk from Hanazono Sta. (parking available)
- http://www.chukasobamachan.com/



## Kinco.hostel+café

### The Town's Hostel

Originally a bank vault facility from 50 years ago, this building was renovated to provide a lounging area for the people in the area to gather for some luscious coffee or a savoury meal on the first floor; the second floor is now a Western-style hostel with a common room fit with single bunk beds that still allow for your privacy.

Takamatsu-shi Hanazono-cho 1-6-6  
Hostel: ☎087-887-0747

- Prices: Single - 3,500 yen ○total capacity: 20
- Access: app. 5-min. walk from Hanazono Sta. http://kinco.jp/



## See, Learn, Feel

**Wooden Mold Workshop - Ichihara / Mamehana**

Shikoku's one and only wooden mold confectionery artist Yoshihiro Ichihara's workshop. You can try the *katanuki* technique with *wasanbon* (refined Japanese sugar) at Mamehana. #booking required

Wooden Mold Workshop Ichihara:  
Takamatsu-shi Hanazono-cho 1-7-30 Mamehana:  
Takamatsu-shi Hanazono-cho 1-9-13 ☎087-831-3712

- Open 10:00 - 17:00 ○Closed Thur.
- Access: app. 5-min. walk from Hanazono Sta. http://www.mamehana-kasikigata.com/

## A New Vision for Sugar



Presents by Kagawa Pref.

possibility to change fructose that you can find at any supermarket into D-psicose. Up until now, psicose was only produced in small quantities through organic chemistry methods, making 1 gram worth 70,000 yen. With these discoveries making its production a much easier feat, these rare gems will now be much closer within your reach.

## The Home of Rare Sugar - Miki

As its name suggests, a rare sugar is a type of sugar only found to occur in very small quantities, thought to amount to around 50 different varieties. Researchers at the Agriculture Department of Kagawa University succeeded in finding ways to mass-produce this fine type of sugar, the most revealing of which being the



## The Beauty of Shirayama, Sanuki's Own Fuji

Shirayama

A mountain that towers over you as soon as you get off the train. Shirayama peaks at 203m, making it a good choice for a climb among beginners. Shirayama Shrine by the foot of the mountain makes for a good spot for cherry blossom viewing.

- Access: app. 1-min. walk from Shirayama Sta. (trailhead)



**Tresta Shirayama**

For swimming and skating

Fun activities all year round with our indoor ice arena during Winter and our outdoor pool during Summer! Tennis court open everyday.

Kita-gun Miki-cho Shimotakaoka 972-30 ☎087-898-8881

- Open hours: Pool - 10:00 - 17:00 Tennis court - 7:00 - 22:00
- Prices: Pool - 1,100 yen / adult (tax inc.) Ice arena - 1,200 yen / adult (tax inc.)
- Tennis court - 1,080 yen on weekdays, 1,620 yen on weekends (tax. inc.)
- Access: app. 1-min. walk from Shirayama Sta. http://www.tresta.jp/

**Pool ticket**  
Enjoy a train ride and a day at Tresta Shirayama's outdoor pool, plus a shaved ice treat with this discount ticket!

**Skating ticket**  
Ride the train to Tresta Shirayama's ice arena with this discount ticket including travel, ice arena entry, and skating equipment (skate boots + gloves)!

## Nagao-ji Temple

The 87th temple in Shikoku's Pilgrimage route, this is where High Monk Koubou led the *Homa* ritual to protect the harvests and keep peace and gifted the people with a *Homa* talisman before going to China, thus creating the famous *Taikai Youfuku Ubai* held on January 7th - also known as a celebration where people challenge their strength against three giant *kagami mochi*. You can also try monk cuisine with Honbou Zenshou's vegetable *kaiseki*.

\*For more details, contact ☎0879-52-5251.



Sanuki-shi Nagaonishi 653 ☎0879-52-2041

- Access: app. 3-min. walk from Nagao Sta. http://www.nagaoji.com

## Soothing moments



## IKUNASg(gallery)

A shop showcasing Sanuki's unique craftsmanship with high quality traditional *temari* and lacquer work, with workshop opportunities for the curious.

Takamatsu-shi Hanazono-cho 2-1-8 Mori Bldg. 2nd floor ☎087-833-1361 (tao.)

- Open 12:00 - 18:00
- Closed Mon. (open during exhibition periods + national holidays)
- Access: app. 5-min. walk from Hanazono Sta. http://www.tao-works.jp/ikunas



## Twinpal Nagao

A leisure spot fit with a warm water pool, hot springs, and a training room. In the hot spring area you can enjoy not only your usual sauna routine, but also a revitalising soak in the open-air bath. The climbing wall in the warm water pool (seasonal) is a great, creative choice for the children!

Sanuki-shi Nagaomyo 1494-1 ☎0879-52-1126

- Open: [Pool:] 10:00 - 18:00 (last entry: 17:00) ○Open on 7/2,3,9,10 and 7/16 - 8/28 [Hot springs:] 10:00 - 21:30 (last entry: 21:00) [Fitness room:] 10:00 - 20:30 (last entry: 20:00) [Arena:] 9:00 - 22:00
- ※Between 7/16 - 8/28, facilities will close at 18:00 every Wed. (last entry: 17:00)
- Closed Wed. (next day on national holidays) ※Open everyday from 7/16 - 8/28
- Access: app. 10-min. drive from Nagao Sta. http://www.sanuki-sa.jp/twinpal/index.php



# 志度線 Shido-Line

Kawaramachi ↔ Kotoden-Shido

The train line that started Kotoden's own journey

Make your shopping and sight-seeing easier  
Bring your bicycle on the train with no extra charge!

**Cycling train** running on Sat./Sun./Holidays!

- Running on Sat./Sun./Holidays only ○Area: Shido line
- Bicycles allowed on one passenger car only (in every 3 carriage train) ※Subject to change
- ★Visit our homepage for more details
- ☎087-863-7300 (weekdays 9:00 - 17:00)
- ☎087-831-6008 (out of office hour)
- http://www.kotoden.co.jp/

Bring your bicycle with you and save time reaching your destination!



## Wander through Yakuri on wheels!

Stone material town, home to Isamu Noguchi An area of art and history with Mt. Goken - known for its aiji stone pit - looming over Yakuri station and the lit genpei stone road. Make your tour easier on your feet with the bicycle rental service!

### Bicycle Rental (electric type)

- Rental period: 8:30 - 19:00 (available everyday)
- Rental fee: 500 yen / 3 hours (extendable for 100 yen / hour)
- ※Deposit: 3,000 yen (repaid upon return)
- How to rent: fill out request form and terms agreement form (proof of identity required)

With electric assist



### Takamatsu Folk Crafts Museum



A clear look into the society's historical development of stone tools, with focus on the use of the aiji stone starting from the taisho period to the Showa period in scenery and stonemasonry. Special exhibitions and workshops held periodically.

- Takamatsu-shi Mure-cho Mure 1810 ☎087-845-8484
- Open 9:00 - 17:00 (exhibition hall last entry: 16:30)
- Closed Mon. (next day on national holidays), New Years (subject to change)
- Entry fee: 200 yen (university students: 150 yen)
- Access: app. 30-min. walk from Yakuri Sta. http://www.city.takamatsu.kagawa.jp/23508.html

### Yakuri Cable Car



Ride the cable car to the top of Mt. Goken as the cityscape of Takamatsu spreads out below you. The ride takes around 4 minutes to reach the top of the mountain where you will find the 85th temple of Shikoku's Pilgrimage route. Takamatsu-shi Mure-cho Mure 3378-3 ☎087-845-2218

- Open everyday 7:30 - 17:15 (Sun./national holidays: until 7:00)
- Tickets (return): Adults - 930 yen, Elementary school students and younger - 460 yen
- Access: app. 20-min. walk Yakuri Sta. http://www.shikoku-cable.co.jp/yakuri/

### Sculptor Isamu Noguchi Museum, a Symbol of 20th Century History

#### Isamu Noguchi Garden Museum

Born from his own atelier, this museum sheds light on 150 samples of his artwork, his quarters and sculpture garden - the entire space is one unified work of art: one that has been kept true to its conditions as Isamu Noguchi's lifetime. ※For tours, booked tickets will be posted back to you. ★Visit our homepage for more information

#### Accessible areas

- Stone Wall Atelier, Exhibition Hall, Isamu's Residence Area, Sculpture Garden
- Takamatsu-shi Mure-cho Mure 3519 ☎087-870-1500
- Access: app. 20-min. walk from Yakuri Sta.
- Entry fee: Adults / University students - 2,160 yen / High-school students = 1,080 yen / Middle-school students or lower = free (group discount available) http://www.isamunoguchi.or.jp

A popular spot for local souvenirs and food, and an extensive park, great for an active day with family and friends

#### Roadside Station - Genpei-no-Sato-Mure

Besides the wide selection of local products and seafood cuisine, here you will also find a retro train model that you can go in and explore, with the rumbling sound of the rail tracks underneath in the background. Takamatsu-shi Mure-cho hara 631-7 ☎087-845-6080

- Open everyday 9:00 - 18:00 (until 17:00 between Nov. and Feb.)
- Access: app. 5-min. walk from Fusazaki Sta. http://www.genpei-mure.com/

Udon Restaurant Rec. "Yamada-ya" See p.15 for more details

Isamu Noguchi Garden Museum

Bring your bicycle with you and save time reaching your destination!

Yakuri-ji Temple

Yakuri mountain top

Yakuri trailhead

Easy hill road

Takamatsu Folk Crafts Museum

Lit genpei stone road

Yakuri Sta. (Bicycle Rental Serv.)

Kawaramachi

Imabashi

Matsushima-Nichome

Oki-Matsushima

Kasugagawa

Katamoto

Kotoden-Yashima

Furu-Takamatsu

Yakuri

Rokumanji

Omachi

Yakuri-Shimmichi

Shioya

Fusazaki

Hara

Kotoden-Shido

## A stone-lit evening

### Up lit genpei stone road

Join natives in a Summer tradition and walk through former main aiji road from the Genpei period leading up from Yakuri station as it is taken over by a magical atmosphere with aiji stone lit along the pathway in the evening.



### Yakuri-ji Temple

Mt. Goken towers over Yakuri-ji Temple - the 85th of Shikoku's Pilgrimage route. The resident god, referred to as Shouten, is said to grace the people with prosperity in business and marriage, respectively symbolised by a pouch and daikon. Takamatsu-shi Mure-cho Mure 3416 ☎087-845-9603

http://www.88shikokuhenro.jp/kagawa/85yakuriji/



## The View from Setonaikai National Park

### Yashima

One of Kagawa's main symbols, this mountain is known for staging the Genpei War and its roof-like shape. The chance to gaze upon the islands scattered across the Setouchi Sea and the city of Takamatsu from the top of the mountain has attracted many, and you can try it yourself with the shuttle bus service!

### New Yashima Aquarium

An aquarium extravagantly built on top of the mountain, with equally extravagant West Indian manatees and many live shows with dolphins, seals, and more! Takamatsu-shi Yashima Higashimachi 1785-1 ☎087-841-2678



### Shikoku Mura Village & Shikoku Mura Village Gallery

An open-air museum where visitors can get a close glimpse at the ways and customs, traditional houses and tools of generations dating back all the way to the Edo period up until the Taisho period. Make sure to visit the park and art gallery designed by architect Tadao Ando, displaying paintings by artists such as Picasso and Renoir while you're here.



- Takamatsu-shi Yashimanakamachi 91 ☎097-843-3111
- Open everyday (except for maintenance) 8:30 - 17:00 (art gallery: 9:00 - 16:00)
- Entry fee: Adults - 1,000 yen / High-school students - 600 yen / Middle/Elementary school students - 400 yen (gallery entry fee inc.)
- Access: app. 5-min. walk from Kotoden-Yashima Sta. http://www.shikokumura.or.jp/



### Baisen moto - Waraku

The owner and staff invite you to enjoy a moment of soothing indulgence (as the name waraku suggests) with home-roasted coffee in a space they laid out themselves for your utmost comfort. This shop offers a large collection of gift choices and room to adapt to any demands, and its collaboration project with Kotoden, "Coffee Train", has attracted locomotive fans old and new. Sanuki-shi Shido 365-9 ☎0120-756-578

### Aeon Cinema Takamatsu-Higashi

Ride any line all day with your special one-day ticket including travel + cinema + mini popcorn set! Adults - 2,000 yen / Middle-school students - 1,800 yen, Children - 1,300 yen Takamatsu-shi Fukuoka-cho 3-8-5 Aeon Takamatsu-Higashi 3rd floor ☎087-822-0505 ○Open everyday

○Access: app. 10-min. walk from Oki-Matsushima Sta. http://www.aeoncinema.com/cinema/takamatsu/



## Gen-chari (gen bicycle)

A cute bicycle inspired by the gen'gai yaki ceramic art, believed to be developed by Gen'nai himself. Take it for a ride along pilgrim routes, restaurants and historical routes in the area!

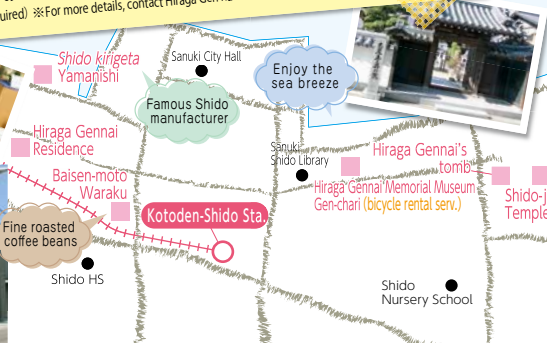
### Tourist Bicycle Rental Service (Hiraga Gennai Memorial Museum)

- Rental period: 9:00 - 16:30
- Rental fee: A - Tourist Passport inc.: 1,800 yen B - Hiraga Gen'nai Memorial Hall entry fee inc.: 1,400 yen
- C - Gen bicycle only: 1,100 yen (500 deposit repaid upon return)
- How to rent: call 087-894-1684 for your booking (Hiraga Gen'nai Memorial Hall, closed Mon; proof of identity required) ※For more details, contact Hiraga Gen'nai Memorial Hall



### Hiraga Gennai Memorial Museum

Hiraga Gen'nai, natural from Shido, Sanuki, is known for creating Japan's first elekter. This institution honours his work as an inventor, writer, artist, entrepreneur, as well as other contributions in other fields. If you walk the 550m East leading to his former residence (now part of the Tangible Culture Properties of Japan), you can get a taste of the periodic local shopping district. Sanuki-shi Shido 587-1 ☎087-894-1684



We mean it - it's very likely you'll find some of our staff at one or two of these!



### A Reference in Self-service Local Udon Loved by Locals



Kotohira line  
Hayuka Sta.

Ayauta-gun Ayagawa-cho Hayukashimo 2222-5  
☎087-876-5377  
○Open 10:00 - 17:00  
○Closed Mon. (next day on national holidays)  
○Access: app. 18-min. walk from Hayuka Sta.

#### 本格手打ちうどんセルフ はゆか

Genuine handmade udon self-service Hayuka

Make sure to come early, because this restaurant's combination of meat, noodles, and *dashi* is one that runs out often. Using only domestically produced meat and a variety of wheat in their thick, chewy noodles, the staff's fussiness over their ingredients won't betray you. With a total of 72 seats, this restaurant is always bustling with activity.



### Straight from The Pot by The Waterwheel



Shido line  
Kotoden-Yashima Sta.

Takamatsu-shi Yashimanakamachi 91 ☎087-843-3115  
○Open everyday 10:00 - 19:00  
(from 9:00 on Sat./Sun/holidays; closes at 18:30 during Winter; LO 30 min. before closing time)  
○Access: app. 5-min. walk from Kotoden-Yashima Sta.

#### わら家 Wara-ya

Located in one of the corners of Shikoku Village House Museum in locals' beloved Shikoku Village, Wara-ya paints a faithful portrait of traditional houses from the Edo period. Bring your family and friends for a rare opportunity to try a bowl of freshly-pound, freshly boiled *udon* straight from the pot with grated ginger and some *dashi* served in a small sake cup.



### Authentic Sanuki Udon, Self-service Form

#### 上原屋本店 Uehara-ya-Monten

"Hot or cold?" a mighty voice greets you the moment you step in. Take your *udon* order and top it with *tempura* or whatever you'd like. Scald the noodle, pour in the *dashi*, add your seasoning - this is the place to go when you want a true taste of the self-service experience in *udon*. This is where everything you need to make your ideal *udon*, from the basics to any pickiness you may have, is ready within your reach.



Kotohira line  
Ritsurin-Koen Sta.

Takamatsu-shi Ritsurin-cho 1-18-8 ☎087-831-6779  
○Open 9:00 - 16:00 ○Closed Sun.  
○Access: app. 5-min. walk from Ritsurin-Koen Sta.



### Popular Original Menus

#### 香川屋本店 Kagawa-ya-Monten

This restaurant spares no effort when it comes to achieving the best combination of seasonal ingredients and the customers' preferences. Great attention is given to tailoring every little detail, from the thickness of the noodle to the fire cooking the *dashi*, and generous they are with the *tempura* and other toppings. Female customers particularly like the new specialty using okra, plum and thick *wakame*.



Kotohira line  
Kurikuma Sta.

Marugame-shi Ayauta-cho Kurikuma-Higashi 469-1  
☎0877-57-1675 ○Open 10:00 - 18:30  
○Closed on the 1st Tuesday of the month  
○Access: app. 3-min. walk from Kurikuma Sta.



### A Charm Equal to That of The Tangible Cultural Properties of Japan

#### うどん本陣 山田家 Udon-Honjin Yamada-ya

Remodelled from an old family's house acknowledged by the Tangible Cultural Properties of Japan, this restaurant gives you the opportunity to gaze upon the 2,644m<sup>2</sup> garden from the *tatami* room seats and witness the different facets of each season as you taste an authentic bowl of *udon*.



Shido line  
Yakuri Sta.

Takamatsu-shi Mure-cho Mure 3186  
☎087-845-6522  
○Open everyday 10:00 - 20:00  
○Access: app. 15-min. from Yakuri Sta.



### A humble place, an easy system

#### うどんの田 Udon no Den

Standing inconspicuously in the residential area, this restaurant was originally a barn later renovated while keeping some of its original charm. Generous on finely cut beef, the noodles are firm, but just smooth enough to give you that velvety feeling, making it a perfect match for the natural and light *dashi* broth.

Kotohira line  
Busshozan Sta.

Takamatsu-shi Terai-cho 38-1 ☎087-889-2930  
○Open 10:00 - 14:00 (from 6:00 on Sat.)  
○Closed Sun. (open on national holidays)  
○Access: app. 10-min. walk from Busshozan Sta.



### The Best Lunch Menu Deals

#### 将ハうどん Shouhachi Udon

You are sure to find their signboard on your way to Konpira-san from Kotoden-Kotohira Sta. While being a full-service restaurant aimed at tourist visitors, this place offers very reasonable menus including *udon*, rice balls and *oden* for 540 yen. Their large portions of *udon* and extra large *kitsune* attract hungry tourists and students alike, and if you can finish it in less than 15 minutes, it's on the house. Are you up for the challenge?

Kotohira line  
Kotoden-Kotohira Sta.

Nakatado-gun Kotohira-cho Yuubinkyoku-mae 664-14  
☎0877-75-3224  
○Open 10:00 - 15:00 ○Closed Tue.  
○Access: app. 2-min. walk from Kotoden-Kotohira Sta.



### A Casual Stop-in While Waiting for The Train

#### 牟礼製麺 Mure Seimen

A veteran noodle place with over 60 years of history - the gentle, somehow nostalgic taste of its cuisine is likely the reason why it has remained popular for such a long time. Mure Seimen is proud of its thorough balance of bonito, dried sardine and kelp in the *dashi* of their *kakeudon* basic set for 180 yen. You can also try some Chinese or Japanese *soba* while you're here, or make it your quick stop while you wait for your train just around the corner.

Shido line  
Kotoden-Shido Sta.

Sanuki-shi Shido 503 ☎087-894-0039  
○Open 11:00 - 16:00 ○Closed Sun.  
○Access: app. 1-min. walk from Kotoden-Shido Sta.

